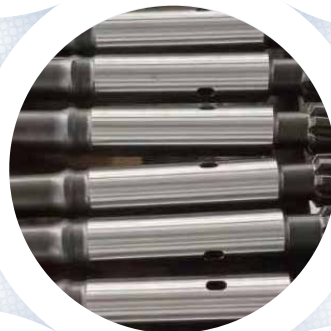


Long products
Product Manual

**线棒产品
产品手册**



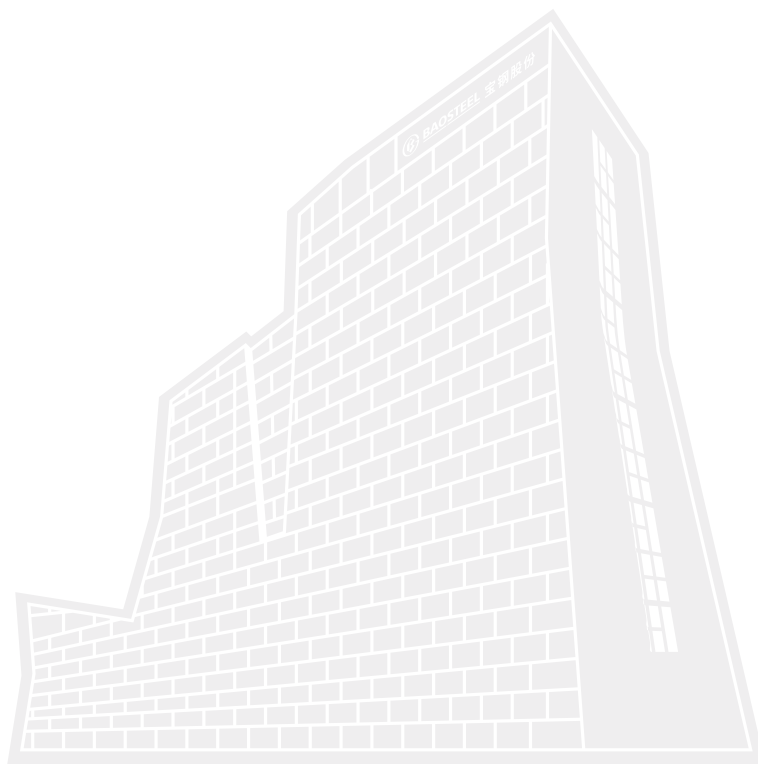
www.baosteel.com



目录

CONTENTS

- 冷镦钢盘条
(COLD HEADING WIRE ROD)
- 弹簧钢盘条
(SPRING STEEL WIRE ROD)
- 桥梁缆索镀锌钢丝用盘条
(WIRE ROD FOR GALVANIZED STEEL WIRES FOR BRIDGE CABLES)
- 焊接用盘条
(WIRE ROD FOR WELDING)
- 超级耐候盘条
(SUPER WEATHER-RESISTANT WIRE ROD)
- 轴承钢
(BEARING STEEL)
- 齿轮钢
(GEAR STEEL)
- 曲轴连杆用钢
(STEEL FOR CRANKSHAFT & CONNECTING ROD)
- 轴类零部件用钢
(STEEL FOR SHAFT PARTS)
- 系泊链用钢
(STEEL FOR MOORING CHAIN)
- 矿用链条钢
(STEEL FOR MINING CHAIN)
- 钎具钢
(ROUND STEEL FOR DRILL TOOL)



冷镦钢盘条 COLD HEADING WIRE ROD



性能特点 / PERFORMANCE FEATURES

性能稳定、表面质量高、冷镦性能优良。

Stable performance, high surface quality, excellent performance of cold heading.

产品特点 / PRODUCT FEATURES

品种齐全：碳系列、B系列、低合金系列、合金系列

强度级别跨度大：可供应14.9级(含)以下

适应环境能力强：一般用途、耐热用途、耐蚀用途等

加工制造性能优良：质量稳定性高，冷镦开裂率低

Product variety: carbon series, boron series, low alloy series and alloy series;

Large strength level span: 14.9 level(including) and the following;

High environmental adaptability: general use, heat resistance, corrosion resistance, etc.;

Excellent manufacturing performance: high quality stability, low rate of cold heading cracking.

微观组织 / MICROSTRUCTURE

铁素体+珠光体;铁素体+贝氏体

F+P; F+B



热轧盘条 Hot rolling wire rod



退火盘条 Annealing wire rod



调质盘条 QT wire rod

主要用途 / APPLICATIONS

主要用于制造各类汽车用螺栓、螺母、螺钉、铆钉等紧固件。

Mainly used for the manufacture of various automobile bolts, nuts, screws, rivets and other fasteners.

力学性能 / MECHANICAL PROPERTIES

| 牌号 GRADE | 抗拉强度Rm, MPa TENSILE STRENGTH | 断后伸长率A, % ELONGATION | 断面收缩率Z, % AREA REDUCTION |
|-------------|---------------------------------|-------------------------|-----------------------------|
| SWRCH10A | 350~450 | 35~450 | 65~80 |
| 10B21 | 470~550 | 470~550 | 55~75 |
| SCM435 | 900~1100 | 900~1100 | 20~45 |
| SCM440 | 950~1150 | 950~1150 | 20~40 |

可供规格 / AVAILABLE SIZES

Φ5.5-50mm

弹簧钢盘条 SPRING STEEL WIRE ROD



性能特点 / PERFORMANCE FEATURES

具有高强度、高面缩率、高纯净度，表面无全脱碳，拉拔性能优良，加工弹簧使用应力高且疲劳寿命优良。

Spring steel wire rod features high strength, high area reduction, high purity, no total decarburization on the surface, excellent drawing performance, high stress and excellent fatigue life.

产品特点 / PRODUCT FEATURES

强度级别系列化: 具备强度级别1800~2100MPa弹簧钢丝用盘条供货能力

适应各种苛刻服役环境: 制定宝钢特色的精炼工艺, 严格控制夹杂物组成、分布、尺寸, 满足传统燃油车、新能源汽车对各类弹簧疲劳寿命的要求。

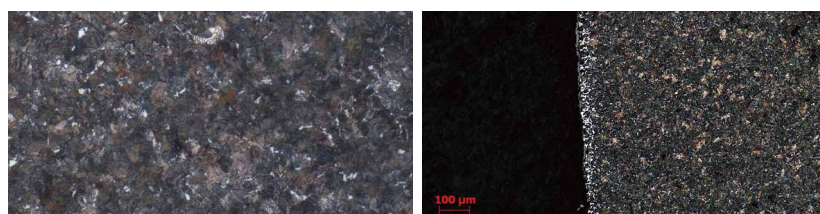
加工制造性能优良: 冶炼、开坯、线材轧制工序制定严格的表面质量管控标准, 保证线材表面质量, 涡流探伤点数少, 具备良好的加工制造性能。

A wide range of strength levels: capable to supply 1800 ~ 2100 MPa strength level spring steel wire rod. Adapt to all kinds of harsh environment: with Baosteel characteristic refining process, strictly control inclusion's composition, location and size to meet spring fatigue life requirements of the traditional fuel vehicles, new energy vehicles.

Excellent processing and manufacturing performance: establishing strict control standards in smelting, billet rolling, wire rolling processes to ensure the surface quality of wire rod, reduce eddy current testing flaws.

微观组织 / MICROSTRUCTURE

铁素体+珠光体、表面脱碳组织
F+P, Surface decarburization layer



主要用途 / APPLICATIONS

广泛应用于欧美系、日系、自主品牌等车型悬架系统。小规格弹簧钢盘条可用于加工柴油发动机和摩托车发动机气门弹簧。

Widely used in suspension system of European, American, Japanese and self-owned brand automobile. Spring steel wire rod of small size can be used for the valve spring of diesel engine and motorcycle engine.

力学性能 / MECHANICAL PROPERTIES

| 牌号 GRADE | 抗拉强度Rm, MPa TENSILE STRENGTH | 断后伸长率A, % ELONGATION | 断面收缩率Z, % AREA REDUCTION | 硬度HRC HARDNESS |
|----------------------|---------------------------------|-------------------------|-----------------------------|-------------------|
| B55SiCr (SAB9254) | ≥ 950 | ≥ 10 | ≥ 32 | ≤ 32 |
| 54SiCr6 | ≥ 950 | ≥ 10 | ≥ 32 | — |
| B55SiCr-S | ≥ 980 | ≥ 10 | ≥ 32 | ≤ 32 |
| B55SiCrV | ≥ 1000 | ≥ 10 | ≥ 30 | ≤ 35 |
| 60Si2CrVAT | ≥ 1000 | ≥ 10 | ≥ 30 | — |
| B60SiCrV7-M | ≥ 1050 | ≥ 10 | ≥ 30 | ≤ 35 |

注：B55SiCr-S为2000MPa级高强度弹簧钢丝加工专用盘条牌号。

Notes: B55SiCr-S is used for the high strength spring steel of 2000MPa level.

可供规格 / AVAILABLE SIZES

Φ5.5-26.0mm

桥梁缆索镀锌钢丝用盘条

WIRE ROD FOR GALVANIZED STEEL WIRES FOR BRIDGE CABLES



性能特点 / PERFORMANCE FEATURES

针对大跨度桥梁建设缆索钢丝加工要求,开发专用牌号产品,盘条组织均匀,力学性能优良,可满足高强度缆索钢丝大减面率、高效率拉拔生产需求,加工钢丝强度可达2100MPa,同时扭转性能优良,完全满足桥梁缆索高强度、长寿命使用要求。

According to the machining requirements of cable steel wire for long-span bridge construction, we developed special grades with uniform structure and excellent mechanical properties, which can meet the high strength cable steel wire reduction rate, high efficiency drawing production needs, process steel wire strength up to 2100 MPa, at the same time, guarantee excellent torsion performance, meet the bridge cable high strength, long life service requirements.

产品特点 / PRODUCT FEATURES

通过高碳、高锰硅及微合金成分优化设计,控轧控冷实现盘条高索氏体化率,确保原始盘条组织、性能均匀,具备高强度、高塑韧性的产品性能。目前已开发出 $\Phi 7.0\text{mm}$ -2100MPa级别镀锌钢丝用盘条产品,具备1670MPa-2100MPa全系列桥梁缆索用钢供货能力,可满足不同强度、规格桥梁缆索钢丝拉拔、镀锌加工需求,产品技术质量处于世界先进水平。

Through the optimization design of high carbon, high manganese silicon and micro-alloy composition, We control rolling and cooling process to achieve the high sorbite rate of the wire rod, ensure the wire rod with uniform structure and properties, with high strength, high plastic toughness performance.

Rod products for galvanized steel wire at $\Phi 7.0\text{mm}$ of 2100 MPa level have been developed. With 1670MPa - 2100MPa full range of steel supply capacity for bridge cables, we can supply our customers of different strengths, specifications bridge cable wire for drawing, zinc plating processing. Our product marks that Baosteel bridge cable wire rod has reached the international leading level.

| 牌号 (Grades) | 镀锌钢丝规格系列 (size) | 镀锌钢丝强度系列 (Strength) |
|-------------|-----------------|---------------------|
| B82MnQL | 7.0mm | 1670MPa |
| | 5.0mm | 1770MPa |
| B87MnQL | 7.0mm | 1770MPa |
| | 5.0mm | 1860MPa |
| B87SiQL | 7.0mm | 1860MPa |
| | 5.0mm | 1960MPa |
| B92SiQL | 7.0mm | 2000MPa |
| | 5.0mm | 2100MPa |
| B96SiQL | 7.0mm | 2100MPa |

微观组织 / MICROSTRUCTURE

铁素体+珠光体 F+P



主要用途 / APPLICATIONS

主要用于桥梁斜拉索和悬索用镀锌钢丝加工。

It is mainly used in the process of galvanized steel wire for bridge cables.

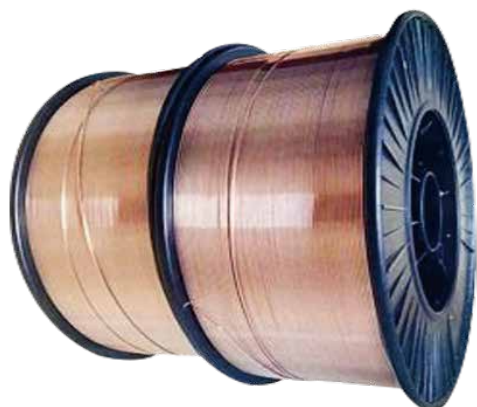
热轧盘条力学性能 / HOT ROLLED WIRE RODS MECHANICAL PROPERTIES

| 牌号 GRADE | 抗拉强度Rm, MPa TENSILE STRENGTH | 断后伸长率A, % ELONGATION | 断面收缩率Z, % AREA REDUCTION |
|-------------|---------------------------------|-------------------------|-----------------------------|
| B82MnQL | 1180~1300 | ≥8 | ≥30 |
| B87MnQL | 1260~1400 | ≥8 | ≥30 |
| B87SiQL | 1260~1450 | ≥8 | ≥25 |
| B92SiQL | 1270~1500 | ≥6 | ≥18 |

可供规格 / AVAILABLE SIZES

Φ11-15mm

■ 焊接用盘条 WIRE RODS FOR WELDING



性能特点 / PERFORMANCE FEATURES

材料纯净度高,表面质量好,具有良好的拉拔性能。

The material has high purity, good surface quality and good drawing performance.

产品特点 / PRODUCT FEATURES

化学成分稳定,纯净度高,产品加工性能优。

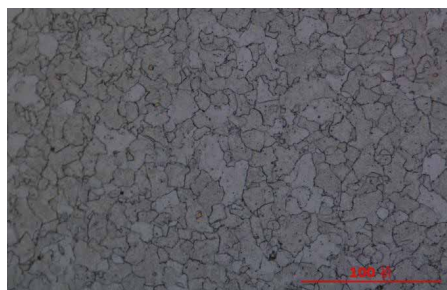
Stable chemical composition, high purity and excellent processing performance.

品种齐全,普通强度及60kg-100kg级高强、超高强度焊接用钢系列化,耐候及耐蚀焊接用钢系列化,管线钢焊接用钢系列化,低温高韧性焊接用钢系列化。

We supply full range of welding wire rods, including normal strength, 60kg-100kg level high-strength, ultra-high strength series, weather and corrosion resistant welding wire rods, pipeline welding wire rods and low temperature high toughness ones.

微观组织 / MICROSTRUCTURE

铁素体 Ferrite



主要用途 / APPLICATIONS

作为填充金属或同时作为导电电极应用于钢结构、管线、工程机械、压力容器、船舶、桥梁、机车车辆、核电等行业的焊接作业。

It is used as filler metal or conductive electrode for welding of steel structure, pipeline, engineering machinery, pressure vessel, ship, bridge, vehicles and nuclear power etc.

典型牌号的力学性能 / TYPICAL GRADES' MECHANICAL PROPERTIES

| 牌号 Grade | 抗拉强度 Rm,MPa | 屈服点 Rp0.2,MPa | 断后延伸率 A,% | 冲击功-20°C AKv,J |
|-------------|----------------|------------------|--------------|-------------------|
| ER70S-G | ≥ 500 | ≥ 420 | ≥ 22 | ≥ 47 |
| BH600-II | ≥ 600 | ≥ 500 | ≥ 22 | ≥ 47 |
| BH700-II | ≥ 700 | ≥ 600 | ≥ 20 | ≥ 47 |

可供规格 / AVAILABLE SIZES

Φ5.5mm、Φ6.5mm

超级耐候盘条

SUPER WEATHER-RESISTANT WIRE ROD



性能特点 / PERFORMANCE FEATURES

超级耐候线材具备优良的强韧性、焊接性和低温冲击性能,可满足冷拔、冷镦、扭转等复杂加工要求,实现免镀锌、免维护、直接裸用。

The super weather-resistant wire rod boasts excellent strength, toughness, weldability and low-temperature impact performance. It can meet complex processing requirements such as cold drawing, cold heading, and twisting, and achieves zinc-free coating, maintenance-free, and direct bare application.

产品特点 / PRODUCT FEATURES

通过特殊成分设计与精准组织调控,钢在大气中自动生成一层致密的保护性锈层,阻碍腐蚀介质向基体渗透,达到“以锈止锈”的效果,并实现耐候性能与机械性能良好匹配,满足工艺线材深加工性能要求。

Through specialized composition design and precise microstructure control, the steel spontaneously forms a dense, inhibiting corrosive agents from penetrating the substrate-an effect known as "using rust to halt rust." This process achieves an optimal balance between weathering resistance and mechanical properties, meeting the processing requirements for the deep drawing of wire rods.

主要用途 / APPLICATIONS

超级耐候线材可应用于固定式/柔性光伏支架、石笼网、山坡护网、围栏网、护栏网、电力传输、紧固件等众多场景。

Super weather-resistant wire rods can be used in various applications including fixed/flexible photovoltaic brackets, gabion nets, slope protection nets, fencing, guardrails, power transmission, and fasteners.

典型牌号的力学性能 / TYPICAL GRADES' MECHANICAL PROPERTIES

| 牌号 GRADE | 抗拉强度R _m , MPa TENSILE STRENGTH | 断面收缩率Z, % AREA REDUCTION | 耐大气腐蚀性指数 ATMOSPHERIC CORROSION RESISTANCE INDEX |
|-------------|--|-----------------------------|---|
| BLS200N | ≤ 400 | ≥ 60 | / ≥ 7.0 |
| BLS300N | ≤ 450 | ≥ 60 | / ≥ 7.5 |
| BLG400N | ≥ 400 | ≥ 60 | |
| BJX800N | ≥ 750 | ≥ 40 | |
| BJX900N | ≥ 900 | ≥ 35 | / ≥ 6.5 |

可供规格 / AVAILABLE SIZES

Φ5.5-24mm

■ 轴承钢 BEARING STEEL



性能特点 / PERFORMANCE FEATURES

材料的纯净度高、均匀性好、疲劳寿命优良。
High purity, uniformity and good fatigue life.

产品特点 / PRODUCT FEATURES

品种全覆盖,可满足国家标准、日本标准、德国标准、美国标准等要求。可多种状态交付。
Products can meet the requirements of national standards, Japanese standards, German standards and American standards etc. with full range of products and varieties of delivery conditions.

主要用途 / APPLICATIONS

主要用于汽车、家电、工程机械、铁路等各行业轴承内圈、外圈及滚动体。
Mainly used in the production of bearing inner rings, outer rings and rolling elements for automobile, household appliances, engineering machinery, railway industry, etc.

典型牌号 / MAIN GRADES

GCr15、SAE52100、GCr15SiMn、G20Cr2NiMo、S55CR、SUJ2、100Cr6、SKF Grade3、SKF 55LS

可供规格 / AVAILABLE SIZES

盘圆产品 Coil products : Φ 5.5-25mm
热轧棒产品 Hot rolling bar products: Φ 20-200mm

齿轮钢 GEAR STEEL



性能特点 / PERFORMANCE FEATURES

具有淬透性窄, 洁净度高, 晶粒细小均匀, 可满足多样化高温渗碳、高疲劳、大扭矩、低变形、易切削等齿轮需求。

With narrow hardenability band, high purity, fine grain size, products can meet the needs for gears of diversified high temperature carburizing, high fatigue, high torque, low deformation, easy for machining etc.

| 末端淬透性带宽 HARDENABILITY BAND | 非金属夹杂物 NON-METALLIC INCLUSIONS | 奥氏体晶粒度 AUSTENITE GRAIN SIZE |
|-------------------------------|-----------------------------------|--------------------------------|
| ≤4HRC | A、B ≤ 2.0 C、D ≤ 1.0 | ≥ 6.0级 |

产品特点 / PRODUCT FEATURES

品种全: Cr、CrMo、CrNiMo、MnCr、CrMnMo等系列产品。

功能特性: 低变形、易切削、高温渗碳等。

Product variety: Cr series, CrMo series, CrNiMo series, MnCr series, CrMnMo series, etc.

Multi-function: low deformation, easy for machining, high temperature carburizing, etc.

主要用途 / APPLICATIONS

主要用于各类齿轮及齿轴类零件。 Mainly used in all kinds of gears and gear shaft parts.

典型牌号 / MAIN GRADES

SAE 8620H、SAE 5120H-M、SAE 5130H、20CrMnTiH、16MnCr5、20MnCr5、20MnCrS5、18CrNiMo7-6、SAE4320H、20CrMoH、SCr420H

可供规格 / AVAILABLE SIZES

φ20-200mm

曲轴连杆用钢

STEEL FOR CRANKSHAFT & CONNECTING ROD



性能特点 / PERFORMANCE FEATURES

易于锻造成型、切削加工性能优良, 高强度、疲劳寿命高。

Easy for forging and machining, high strength and long fatigue life.

产品特点 / PRODUCT FEATURES

品种全: 涵盖各类调质和非调质钢。

非调质钢可实现低碳、环保, 降低用户加工成本。

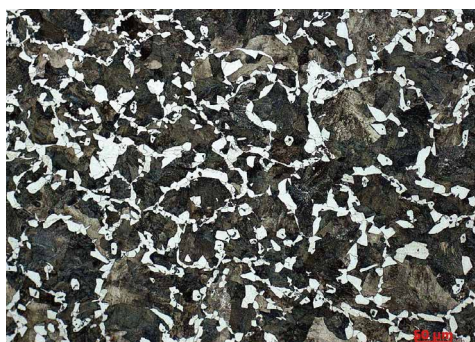
Product variety: products covering all types of quenched and tempered steel and non-quenched and tempered steel.

Non-quenched and tempered steel can achieve low-carbon emissions, environmental protection and reduce user processing costs.

微观组织 / MICROSTRUCTURE

铁素体+珠光体

F+P



主要用途 / APPLICATIONS

主要用于加工商用车和乘用车曲轴及连杆。

Mainly used for cranks and connecting shafts for engine of commercial vehicles and passenger cars.

力学性能 / MECHANICAL PROPERTIES

| 牌号 GRADE | 屈服强度 RP0.2, MPa YIELD STRENGTH | 抗拉强度Rm, MPa TENSILE STRENGTH | 断后伸长率A, % ELONGATION | 断面收缩率Z, % AREA REDUCTION |
|----------------|-----------------------------------|---------------------------------|-------------------------|-----------------------------|
| 49MnVS3 | ≥ 490 | ≥ 780 | ≥ 16 | ≥ 35 |
| 48MnV | ≥ 520 | ≥ 820 | ≥ 16 | ≥ 35 |
| S38MnSiV | ≥ 550 | ≥ 850 | ≥ 16 | ≥ 35 |
| 38MnVS6 | ≥ 550 | ≥ 900 | ≥ 14 | ≥ 35 |
| C38Mod | ≥ 550 | ≥ 820 | ≥ 14 | ≥ 35 |
| 38MnS6(C38+N2) | ≥ 450 | ≥ 750 | ≥ 14 | ≥ 35 |

可供规格 / AVAILABLE SIZES

Φ20-200mm

轴类零部件用钢 STEEL FOR SHAFT PARTS



性能特点 / PERFORMANCE FEATURES

高纯洁度、淬透性带窄、超细晶、易切削、高疲劳

High purity, narrow hardenability band, ultra-fine grain, easy for machining, high fatigue life.

| DI值范围 DI value | 非金属夹杂物 Non-metallic inclusion | 奥氏体晶粒度 Austenite grain size |
|-------------------|----------------------------------|--------------------------------|
| 4-6 | $B \leq 2.0$ $D \leq 1.0$ | ≥ 6 级 |

主要用途 / APPLICATIONS

主要用于实轴、保持器等汽车传动轴零部件，例如新能源汽车减速器输出轴、涡轮轴、传动轴。

Mainly used for automotive drive shaft parts including solid shafts, retainers, such as new energy vehicle speed-reducer output shafts, turbine shafts, and drive shafts.

典型牌号 / MAIN GRADES

SAE 5120H-M、SAE1552、38B3、XC45、UC1、UC2、Cf53、RCf53

可供规格 / AVAILABLE SIZES

规格： $\phi 20-80\text{mm}$ ，供货状态：热轧态、正火态、银亮剥皮态等。

Supply for varieties of delivery conditions: hot-rolled, normal, peeling.

系泊链用钢 STEEL FOR MOORING CHAIN



性能特点 / PERFORMANCE FEATURES

具有超高强度、高韧性、耐腐蚀、耐磨损、焊接性能优良等特点

Feature with ultra-high strength, high toughness, corrosion resistance, wear resistance and excellent welding performance.

产品特点 / PRODUCT FEATURES

强度级别、规格范围全覆盖

Full coverage of strength level and specification range.

主要用途 / APPLICATIONS

用于海洋石油开采浮式生产系统、半潜式钻井平台、单点系泊结构以及浮式生产储油轮等设备的系泊定位系统。

Mainly used for mooring positioning systems of offshore oil exploration floating production platforms, semi-submersible drilling platforms, single-point mooring structure and FPSO, etc .

力学性能 / MECHANICAL PROPERTIES

| 牌号 Grade | 屈服点 Rp0.2,MPa | 抗拉强度 Rm,MPa | 断后延伸率 A,% | 断面收缩率 Z,% | 屈强比 YS/TS | -20°C冲击功AKV, J | |
|-------------|------------------|----------------|--------------|--------------|--------------|-----------------|-----------------------------|
| | | | | | | 平均 (Average) | 最小单值 (Min. Single value) |
| R3 | ≥ 410 | ≥ 690 | ≥ 17 | ≥ 50 | ≤ 0.92 | ≥ 40 | ≥ 30 |
| R3S | ≥ 490 | ≥ 770 | ≥ 15 | ≥ 50 | ≤ 0.92 | ≥ 45 | ≥ 34 |
| R4 | ≥ 580 | ≥ 860 | ≥ 12 | ≥ 50 | ≤ 0.92 | ≥ 50 | ≥ 38 |
| R4S | ≥ 700 | ≥ 960 | ≥ 12 | ≥ 50 | ≤ 0.92 | ≥ 56 | ≥ 42 |
| R5 | ≥ 760 | ≥ 1000 | ≥ 12 | ≥ 50 | ≤ 0.92 | ≥ 58 | ≥ 44 |
| R6 | ≥ 900 | ≥ 1100 | ≥ 12 | ≥ 50 | ≤ 0.92 | ≥ 60 | ≥ 46 |

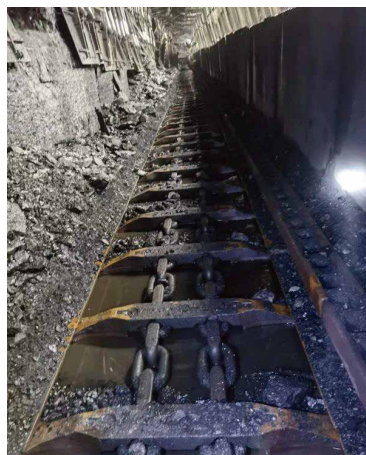
可供规格 / AVAILABLE SIZES

φ50~210mm

矿用链条钢 STEEL FOR MINING CHAIN



23MnNiMoCr54 圆环 (用户提供)
Round link chains of 23MnNiMoCr54
(Photo courtesy of a customer)



YXKB-2 链条 (用户提供)
Mining chains of YXKB-2
(Photo courtesy of a customer)

性能特点 / PERFORMANCE FEATURES

高强韧, 抗应力腐蚀, 耐磨损等

High strength and high toughness, stress corrosion resistance and wear resistance etc.

主要用途 / APPLICATIONS

主要用于煤矿生产和运输设备的大规格高强度矿用圆环链或矿用紧凑链等

Mainly used as large scale and high strength round link chains or compact chains for coal mining production and transportation equipment.

力学性能 / Mechanical properties

| 典型牌号 Grade | 抗拉强度 R _m , MPa Yield Strength | 屈服强度 R _{eL} , MPa Tensile Strength | 断后伸长率 A, % Elongation | 断面收缩率 Z, % Area Reduction | 冲击吸收功 A _{KV2} , J Impact Absorbed Energy |
|---------------|--|---|-----------------------------|---------------------------------|---|
| YXKB-2 | ≥ 1250 | ≥ 1100 | ≥ 12 | ≥ 55 | ≥ 60 |
| 23MnNiMoCr54 | ≥ 1180 | ≥ 980 | ≥ 10 | ≥ 50 | ≥ 40 |

可供规格 / AVAILABLE SIZES

Φ30-95mm

钎具钢 ROUND STEEL FOR DRILL TOOL



性能特点 / PERFORMANCE FEATURES

具有优良的耐冲击、耐磨损、耐腐蚀性能。

Excellent impact resistance, wear resistance and corrosion resistance.

| 牌号 Grade | 抗拉强度 Rm,MPa | 断后延伸率 A,% | 断面收缩率 Z,% |
|----------------|----------------|--------------|--------------|
| 系列1 Series1 | ≥ 1300 | ≥ 9 | ≥ 45 |
| BQ23 | ≥ 1375 | ≥ 10 | ≥ 45 |
| BQ45 | ≥ 1470 | ≥ 7 | ≥ 35 |

注：可根据用户需求进行定制。

Note: Products can be customized for users.

主要用途 / APPLICATIONS

制造凿岩钎具,用于矿业资源开采、交通道路建设、水电项目施工、城镇化建设等领域。

Used for rock drilling tools which have been applied for mining resources exploitation, transportation and road construction, hydropower project construction, urbanization construction and other fields.

可供规格 / AVAILABLE SIZES

φ30~180mm

供货状态 / CONDITION OF DELIVERY

退火态、热轧态、砂剥态

annealing, hot-rolled, grinding.

钢管特钢事业部
Tube Pipe and Special Steel BU

地址: 上海宝山同济路3509号
邮编: 201900
电话: 021-26641773 26642432
传真: 021-26648647

宝钢服务热线
Baosteel Service Hot-line

400-820-8590
宝钢在线
Baosteel Online
http://esales.baosteel.com

钢管特钢事业部网上商城
http://www.ouyeel.com
客服热线: 95025



网上商城



宝钢在线

国内贸易公司 Domestic Sales Channel

上海宝钢钢材贸易有限公司
电话: 021-26640846
传真: 021-26640888

北京宝钢北方贸易有限公司
电话: 010-56512000
传真: 010-56512199

广州宝钢南方贸易有限公司
电话: 020-32219999
传真: 020-32219555

成都宝钢西部贸易有限公司
电话: 028-85335388
传真: 028-85335680

沈阳宝钢东北贸易有限公司
电话: 024-31391158
传真: 024-31391160

武汉宝钢华中贸易有限公司
电话: 027-84298800
传真: 027-84298224

安徽宝钢钢材贸易有限公司
电话: 0551-65227783

东北亚及澳洲大区 Northeast Asia and Oceania Region

宝和通商株式会社
HOWA TRADING CO., LTD.
TEL: 0081-3-32379121
FAX: 0081-3-32379123

首尔事务所
SEOUL OFFICE
TEL: 0082-2-5080893
FAX: 0082-2-5080891

宝钢澳大利亚贸易有限公司
BAO AUSTRALIA PTY LTD.
TEL: 0061-8-94810535
FAX: 0061-8-94810536

墨尔本事务所
MELBOURNE OFFICE
TEL: 0061-03-96636830
FAX: 0061-03-96636835

BGM株式会社
BGM CO., LTD
TEL: 0082-70-4225910
FAX: 0082-31-3514558

高雄事务所
KAOHSIUNG OFFICE
TEL: 00886-7-3356606
FAX: 00886-7-3356609

东南亚及南亚大区 South East Asia and South Asia Region

宝钢新加坡贸易有限公司
BAOSTEEL SINGAPORE PTE LTD.
TEL: 0065-63336818
FAX: 0065-63336819

宝钢越南代表处
VIETNAM OFFICE
TEL: 0084-8-9100126
FAX: 0084-8-9100124

宝新泰国代表处
THAILAND OFFICE
TEL: 0066-2-6368485
FAX: 0066-2-2348989

印尼代表处
INDONESIA OFFICE
TEL: 0062-21-57906240-1
FAX: 0062-21-57901599

宝钢印度有限公司
BAOSTEEL INDIA COMPANY PRIVATE LTD.
TEL: 0091-22-30071700
FAX: 0091-22-30071777

欧非中东大区 Europe, Africa & Middle East Region

宝钢欧洲有限公司
BAOSTEEL EUROPE GMBH
TEL: 0049-89-32709090
FAX: 0049-89-3270909130

宝钢意大利钢材集散中心有限公司
BAOSTEEL ITALIA DISTRIBUTION CENTER SPA
TEL: 0039-010-530881
FAX: 0039-010-5308895

宝钢西班牙有限公司
BAOSTEEL ESPAÑA, S.L.
TEL: 0034-93-4119325
FAX: 0034-93-4119330

宝钢中东公司
BAOSTEEL MIDDLE EAST FZE
TEL: 00971-4-8840458
FAX: 00971-4-8840485

宝欧俄罗斯代表处
RUSSIA OFFICE
TEL: 7-499-2585602
FAX: 7-499-2585602

肯尼亚代表处
KENYA OFFICE
TEL: 00254-708678798
FAX: 0027-11-7842408

宝欧土耳其代表处
TÜRKIYE OFFICE
TEL: 0090-212-3440067
FAX: 0090-212-3440068

宝欧沙特代表处
SAUDI ARABIA OFFICE
TEL: 00966-502894656

宝欧突尼斯代表处
TUNISIA OFFICE
TEL: 00216-36013995

美洲大区 America Region

宝钢美洲贸易有限公司
BAOSTEEL AMERICA INC.
TEL: 001-201-3073355
FAX: 001-201-3073358

洛杉矶代表处
LOS ANGELES OFFICE
TEL: 001-949-7526789
FAX: 001-949-7521234

加拿大代表处
CANADA OFFICE
TEL: 001-905-7315885

墨西哥代表处
MEXICO OFFICE
TEL: 0052-55-91711788
FAX: 0052-55-91711787

宝钢巴西有限公司
BAOSTEEL DO BRAZIL LTDA.
TEL: 0055-11-26678869
0055-11-26678879

卡尔加里代表处
CALGARY OFFICE
TEL: 001-403-4521908
FAX: 001-403-4521428

