

测试报告

No. SHAEC1108419106

日期: 2011年06月09日 第1页,共4页

上海梅山钢铁有限公司
江苏省南京市中华门外新建

以下测试之样品是由申请者所提供及确认: 镀铝锌(无铬钝化+涂油)

SGS工作编号: SP11-017123 - SH
样品接收日期: 2011年06月03日
测试周期: 2011年06月03日 - 2011年06月09日
测试要求: 根据客户要求测试
测试方法: 请参见下一页
测试结果: 请参见下一页
结论: 基于所送样品进行的测试, 测试结果与欧盟RoHS指令2002/95/EC以及后续修正指令的要求相符

通标标准技术服务有限公司
授权签名



Fan Jingjie, JJ 范晶捷
批准签署人

本报告是发布日期为2011年06月09日编号为SHAEC1108419105英文检测报告的中文译本。如有异议, 以英文版本为准。

This document is issued by the Company subject to its General Conditions of Service printed overleaf, available on request or accessible at http://www.sgs.com/terms_and_conditions.htm and for electronic format documents, subject to Terms and Conditions for Electronic Documents at www.sgs.com/terms_e-document.htm. Attention is drawn to the limitation of liability, indemnification and jurisdiction issues defined therein. Any holder of this document is advised that information contained hereon reflects the Company's findings at the time of its intervention only and within the limits of Client's instructions, if any. The Company's sole responsibility is to its Client and this document does not exonerate parties to a transaction from exercising all their rights and obligations under the transaction documents. This document cannot be reproduced except in full, without prior written approval of the Company. Any unauthorized alteration, forgery or falsification of the content or appearance of this document is unlawful and offenders may be prosecuted to the fullest extent of the law. Unless otherwise stated the results shown in this test report refer only to the sample(s) tested.



测试报告

No. SHAEC1108419106

日期: 2011年06月09日 第2页,共4页

测试结果:

样品部件外观描述:

样品编号	SGS样品ID	描述
1	SHA11-084191.001	银色金属板

备注:

- (1) 1 mg/kg = 1 ppm = 0.0001%
- (2) MDL = 方法检测限
- (3) ND = 未检出 (< MDL)
- (4) "-" = 未规定

RoHS指令2002/95/EC

- 测试方法:
- (1) 参照ISO 17925:2004 测定镀层中的镉,铅和汞含量.采用ICP-OES进行分析
 - (2) 参照IEC 62321:2008, 用点测试法/紫外-可见分光光度计比色法测定六价铬的含量

测试项目	限值	单位	MDL	001
镀层中铅(Pb)	1,000	mg/kg	10	12
镀层中镉(Cd)	100	mg/kg	10	ND
镀层中汞(Hg)	1,000	mg/kg	10	ND
六价铬(CrVI)	-	-	◇	Negative

备注:

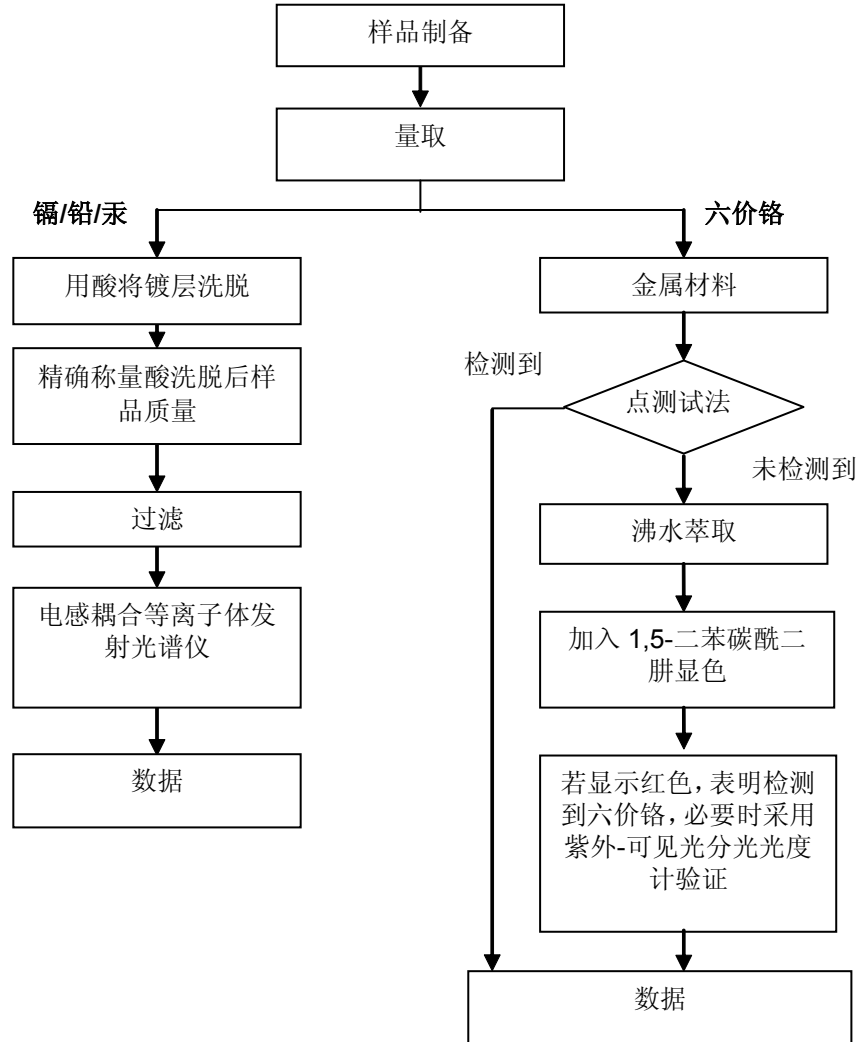
- (1) 最大允许极限值引用自2002/95/EC RoHS指令和后续修正指令2005/618/EC.
 - (2) ◇ 点测试法:
 - Negative= 镀层中未检测到六价铬, Positive = 镀层中检测到六价铬;
 - (当点测试结果为Negative或无法确定时,将采用沸水萃取法作进一步的结果验证.)
 - ◇ 沸水萃取法:
 - Negative = 镀层中未检测到六价铬
 - Positive = 镀层中检测到六价铬; 表明50 cm²表面积的被测试样品的沸水萃取液中六价铬的浓度等于或大于0.02 mg/kg.
- 针对金属表面的防腐涂层:由于未获知样品的存储条件和生产日期,样品的六价铬测试结果仅代表测试时样品的状态.

This document is issued by the Company subject to its General Conditions of Service printed overleaf, available on request or accessible at http://www.sgs.com/terms_and_conditions.htm and for electronic format documents, subject to Terms and Conditions for Electronic Documents at www.sgs.com/terms_e-document.htm. Attention is drawn to the limitation of liability, indemnification and jurisdiction issues defined therein. Any holder of this document is advised that information contained hereon reflects the Company's findings at the time of its intervention only and within the limits of Client's instructions, if any. The Company's sole responsibility is to its Client and this document does not exonerate parties to a transaction from exercising all their rights and obligations under the transaction documents. This document cannot be reproduced except in full, without prior written approval of the Company. Any unauthorized alteration, forgery or falsification of the content or appearance of this document is unlawful and offenders may be prosecuted to the fullest extent of the law. Unless otherwise stated the results shown in this test report refer only to the sample(s) tested.

附件

镀层 Pb/Cd/Hg/Cr⁶⁺测试流程图

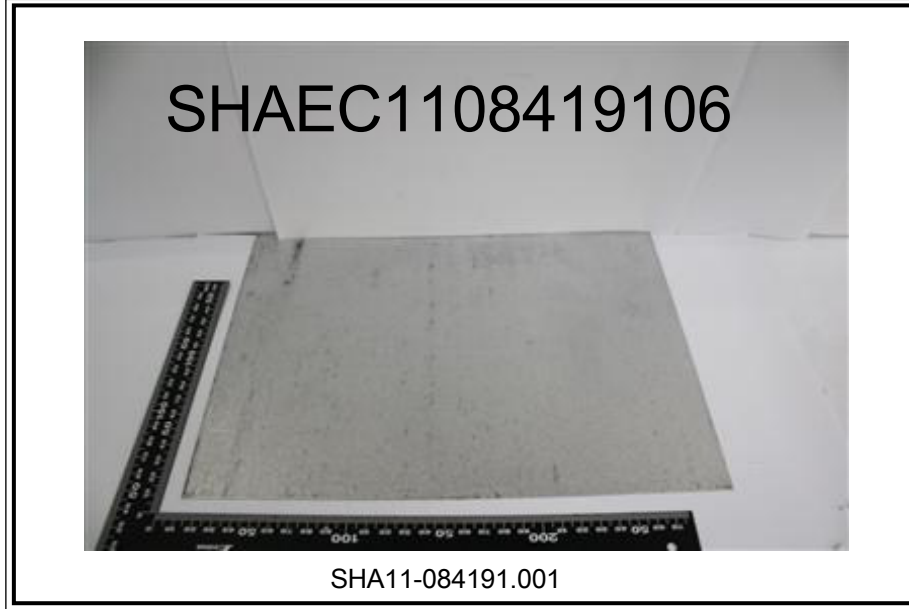
- 1) 分析人员: 王彦青
- 2) 项目负责人: 张春华



This document is issued by the Company subject to its General Conditions of Service printed overleaf, available on request or accessible at http://www.sgs.com/terms_and_conditions.htm and for electronic format documents, subject to Terms and Conditions for Electronic Documents at www.sgs.com/terms_e-document.htm. Attention is drawn to the limitation of liability, indemnification and jurisdiction issues defined therein. Any holder of this document is advised that information contained hereon reflects the Company's findings at the time of its intervention only and within the limits of Client's instructions, if any. The Company's sole responsibility is to its Client and this document does not exonerate parties to a transaction from exercising all their rights and obligations under the transaction documents. This document cannot be reproduced except in full, without prior written approval of the Company. Any unauthorized alteration, forgery or falsification of the content or appearance of this document is unlawful and offenders may be prosecuted to the fullest extent of the law. Unless otherwise stated the results shown in this test report refer only to the sample(s) tested.



样品照片:



此照片仅限于随SGS正本报告使用

*** 报告完 ***

This document is issued by the Company subject to its General Conditions of Service printed overleaf, available on request or accessible at http://www.sgs.com/terms_and_conditions.htm and for electronic format documents, subject to Terms and Conditions for Electronic Documents at www.sgs.com/terms_e-document.htm. Attention is drawn to the limitation of liability, indemnification and jurisdiction issues defined therein. Any holder of this document is advised that information contained hereon reflects the Company's findings at the time of its intervention only and within the limits of Client's instructions, if any. The Company's sole responsibility is to its Client and this document does not exonerate parties to a transaction from exercising all their rights and obligations under the transaction documents. This document cannot be reproduced except in full, without prior written approval of the Company. Any unauthorized alteration, forgery or falsification of the content or appearance of this document is unlawful and offenders may be prosecuted to the fullest extent of the law. Unless otherwise stated the results shown in this test report refer only to the sample(s) tested.

